



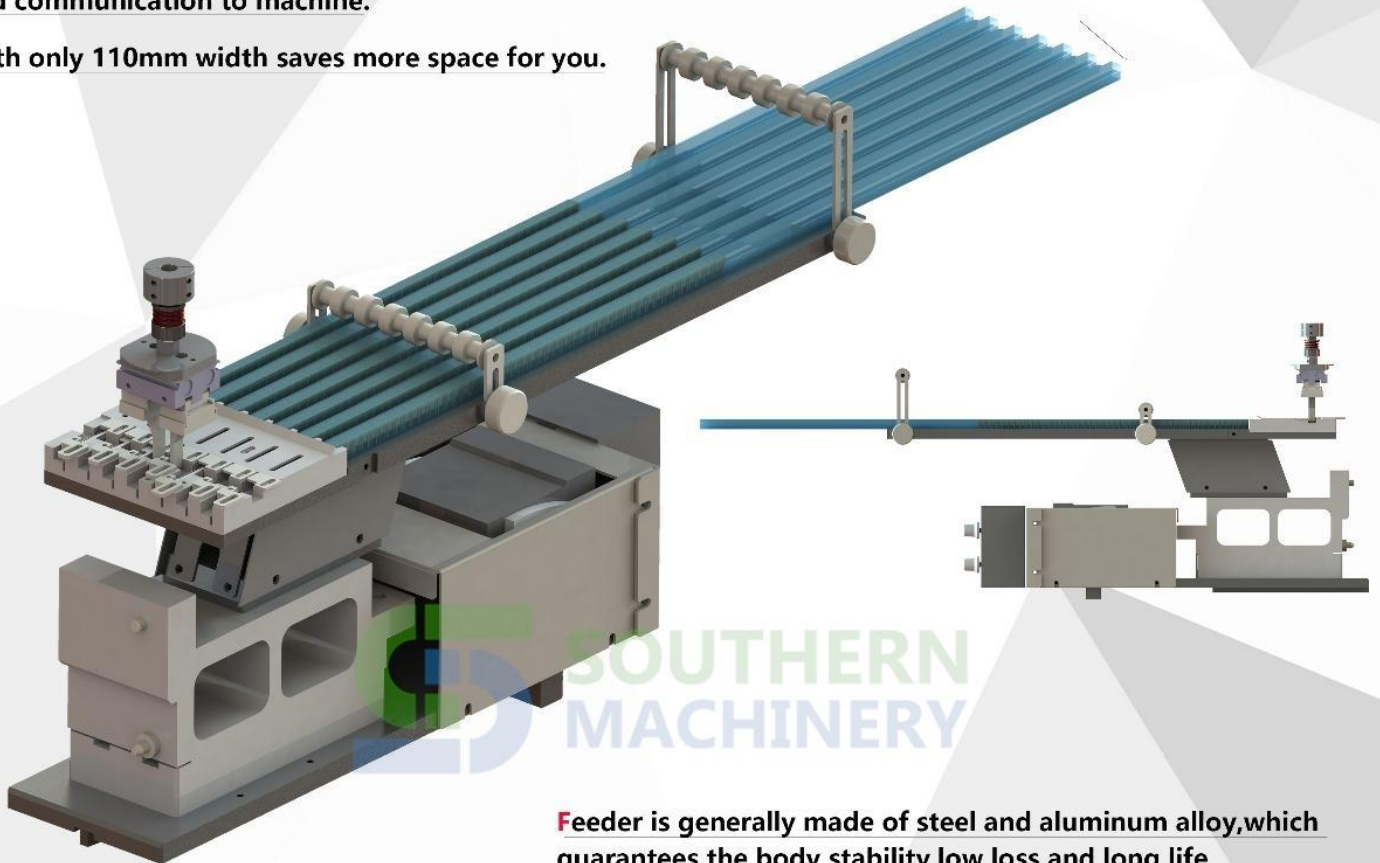
Whatever you want

VTF-1007 VIBRATION TUBE FEEDER 7 LANE

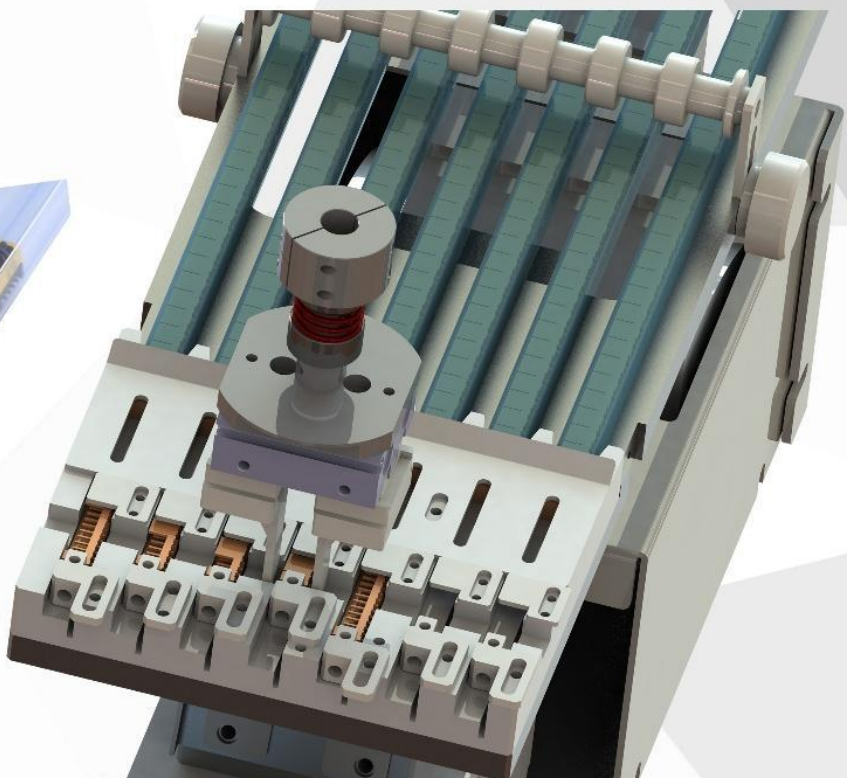
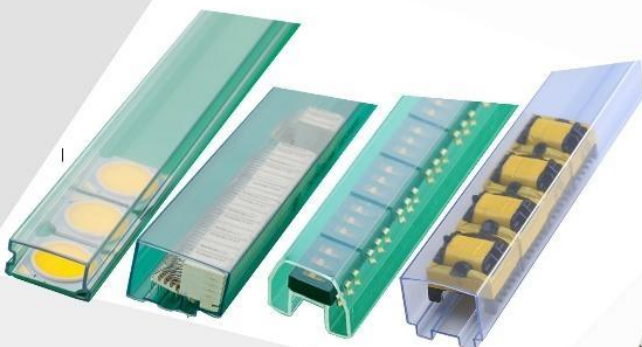
This feeder is use for SMT mounter machine,feeding tubes of components such as: capacitor/safety capacitor/IC/Keys/triode/LED.

Suitable for Panasonic,Juki,Fuji,ASM,Universal ,etc.almost all brands of mounter,which is with height mechanical matching and communication to machine.

With only 110mm width saves more space for you.



Feeder is generally made of steel and aluminum alloy,which guarantees the body stability,low loss and long life.



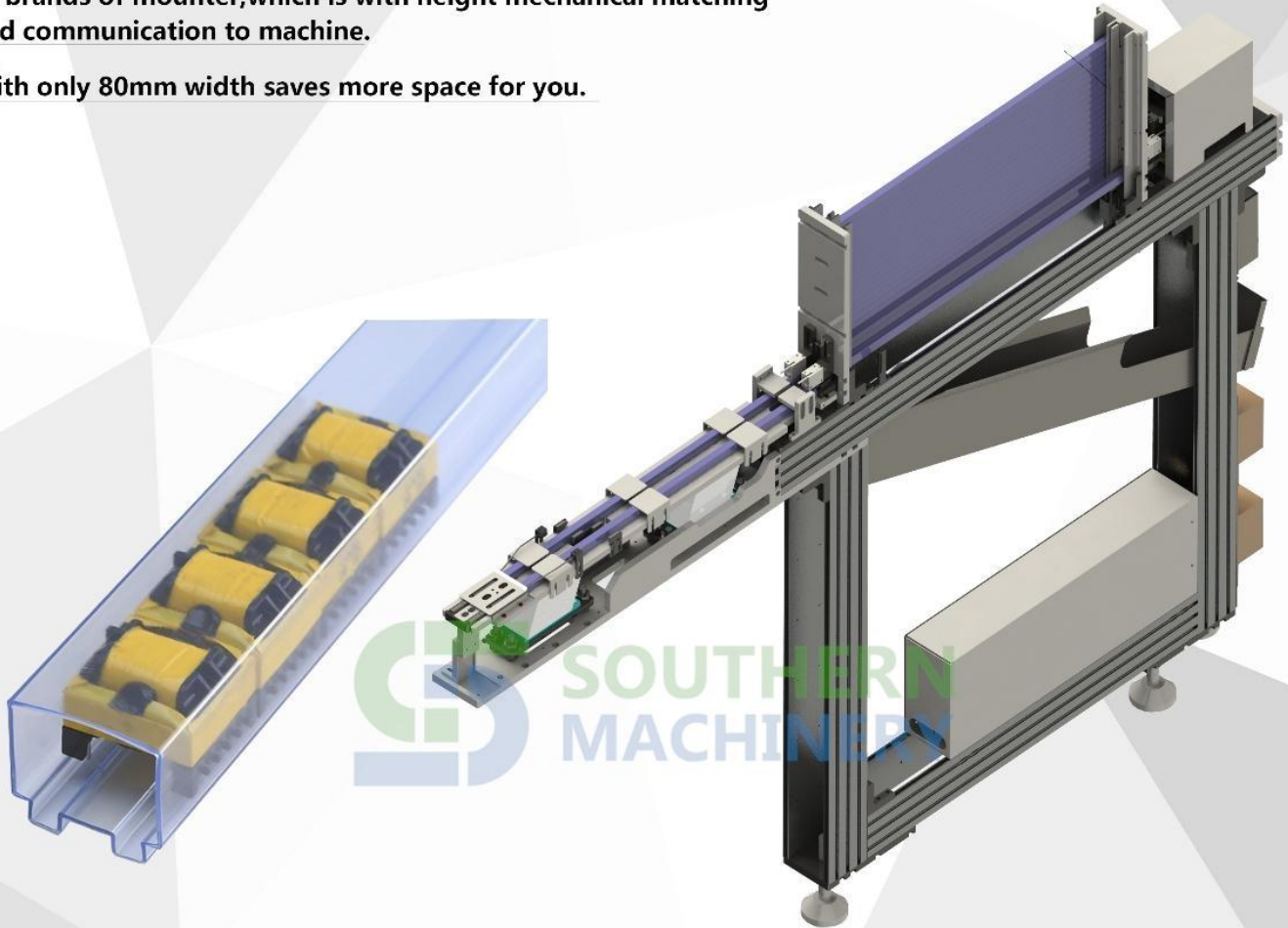
Dimensions L*W*H : 460*110*173 mm
Power supply: 110/220 V
Cycle time: ≤ 0.8 sec.
Control by: Vibe AMP
MAX Load: 7 Tubes

STF-1002 STACKED TUBE FEEDER **DUAL LANE**

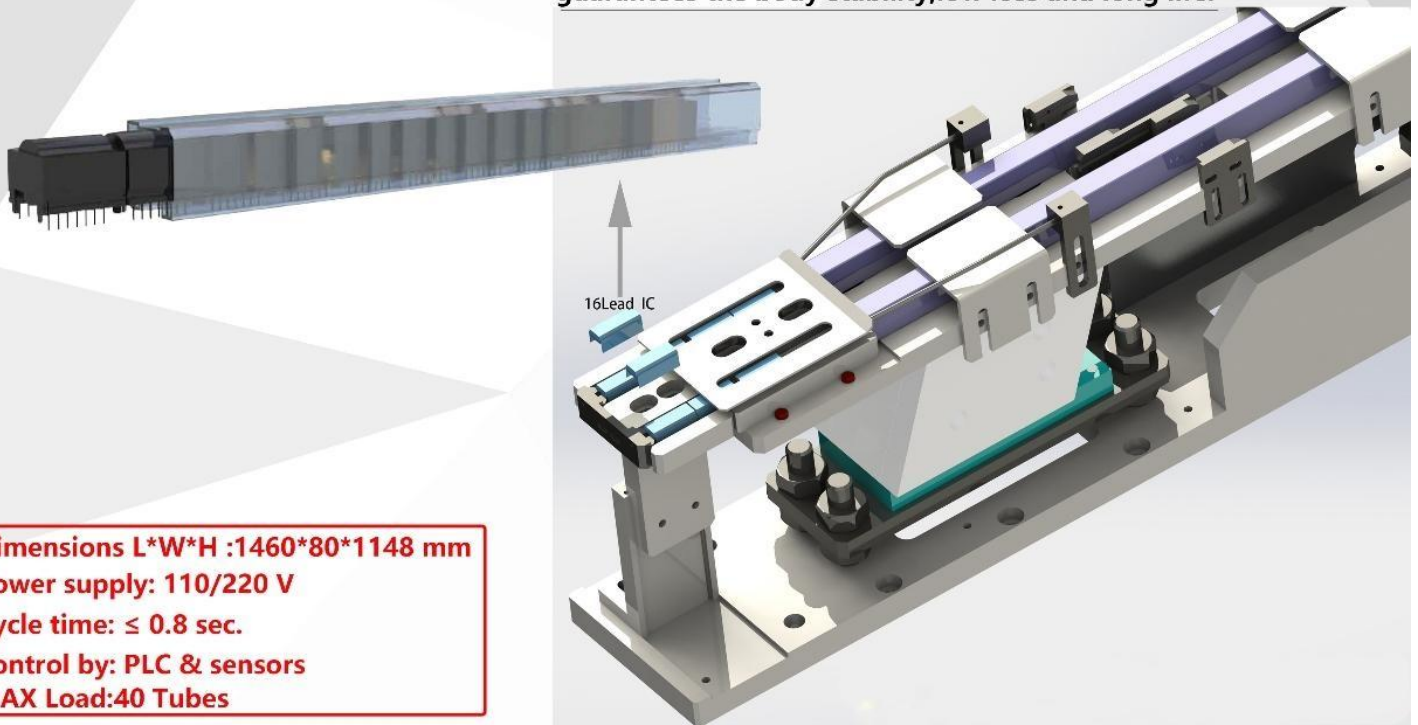
This feeder is use for SMT mounter machine,feeding tubes of components such as: capacitor/safety capacitor/IC/Keys/triode/hardware parts.

Suitable for Panasonic,Juki,Fuji,ASM,Universal ,etc.almost all brands of mounter,which is with height mechanical matching and communication to machine.

With only 80mm width saves more space for you.



Feeder is generally made of steel and aluminum alloy,which guarantees the body stability,low loss and long life.



Dimensions L*W*H :1460*80*1148 mm
Power supply: 110/220 V
Cycle time: ≤ 0.8 sec.
Control by: PLC & sensors
MAX Load:40 Tubes

BF-2002D BOWL FEEDER

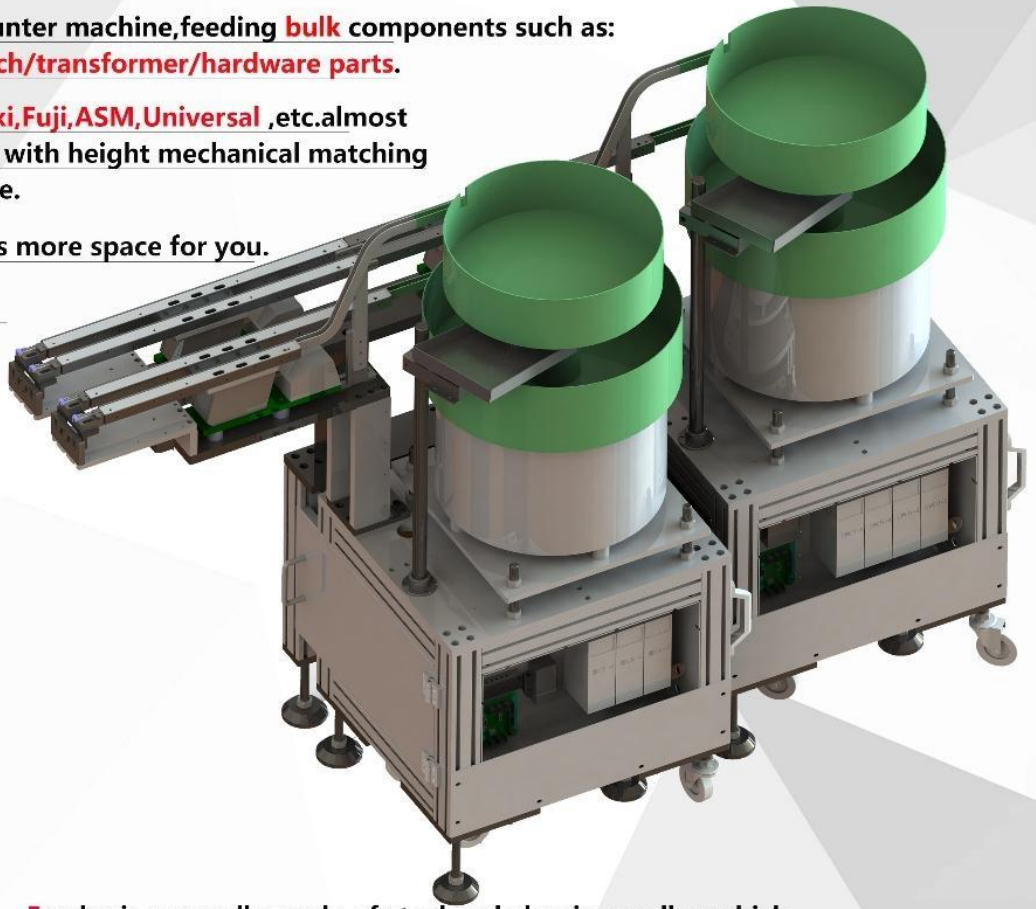


This feeder is use for **SMT** mounter machine,feeding **bulk** components such as:
terminal/safety capacitor/switch/transformer/hardware parts.

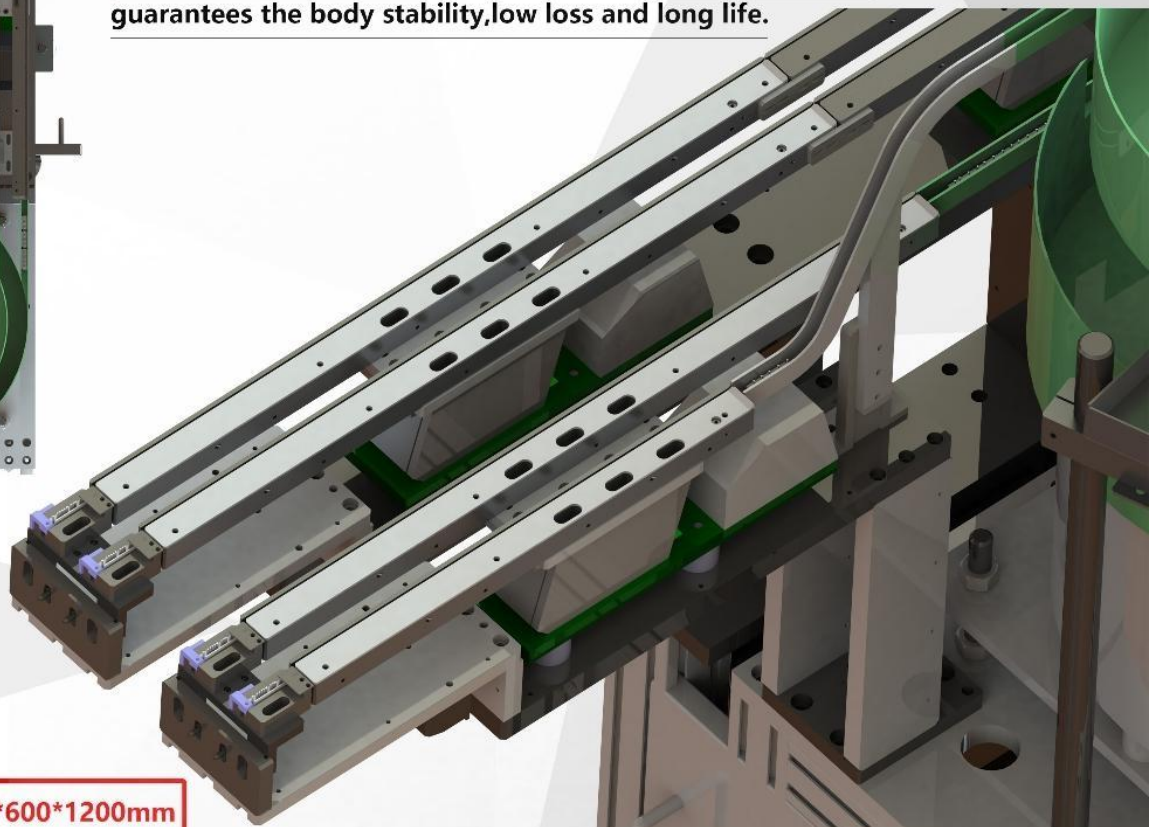
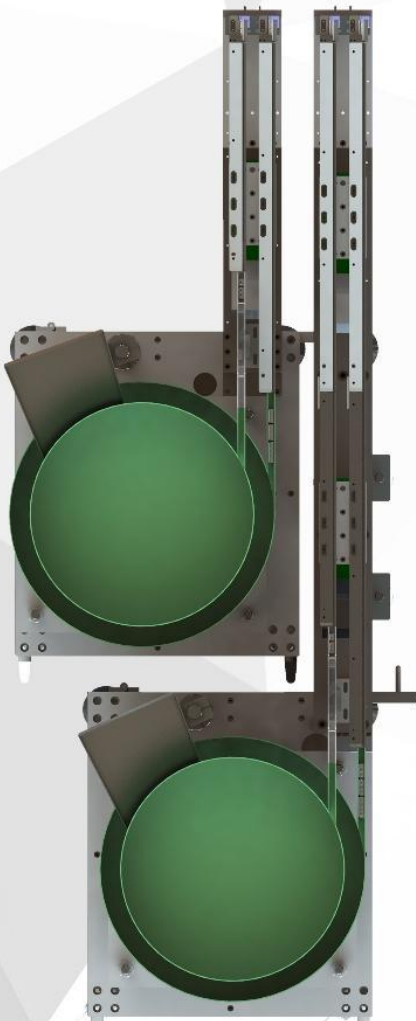
Compatible with Panasonic,Juki,Fuji,ASM,Universal ,etc.almost all brands of mounter,which is with height mechanical matching and communication to machine.

With **double-deck** design saves more space for you.

Transfer orbit width:**231 mm**



Feeder is generally made of steel and aluminum alloy,which guarantees the body stability,low loss and long life.



Dimensions L*W*H :1700*600*1200mm
Power supply: 110/220 V
Cycle time: ≤ 0.8 sec.
Control by: Vibration AMP & Sensors

RTF-1001 RADIAL FEEDER

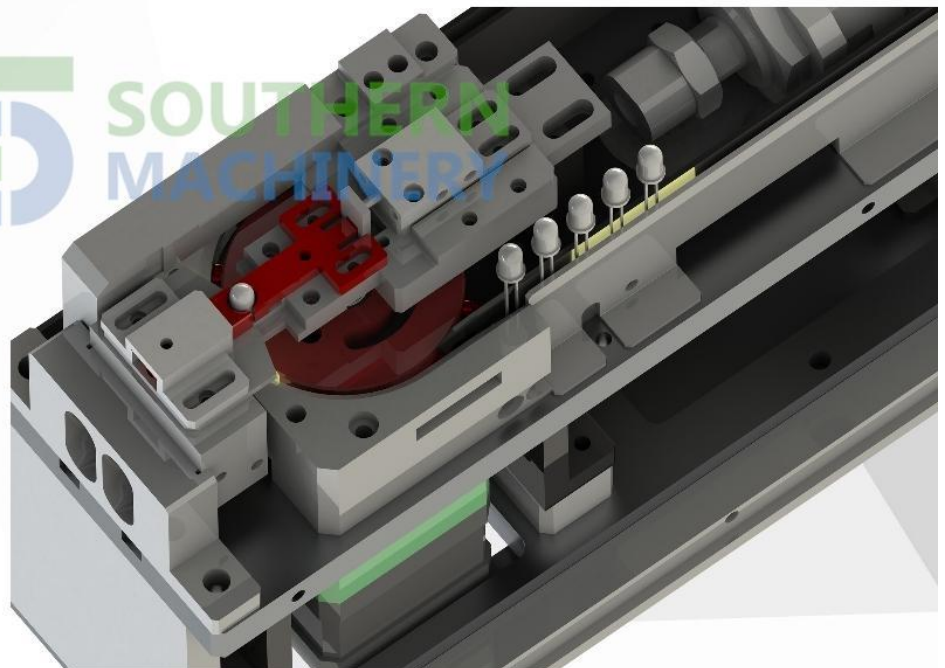
This feeder is use for SMT mounter machine,feeding THT tape components such as: capacitor/safety capacitor/LED/Keys/triode/hardware parts.

Suitable for **Panasonic,Juki,Fuji,ASM,Universal** ,etc.almost all brands of mounter,which is with height mechanical matching and communication to machine.

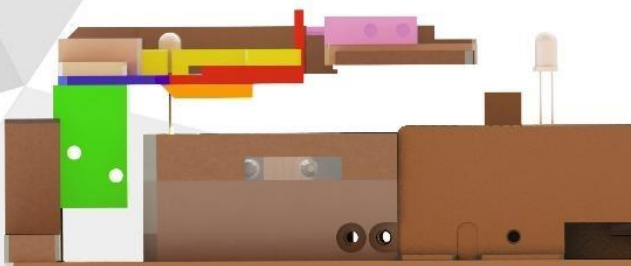
With only 80mm width saves more space for you.



Feeder is generally made of steel and aluminum alloy,which guarantees the body stability,low loss and long life.



Dimensions L*W*H :680*80*140 mm
Power supply: 110/220 V
Cycle time: ≤ 0.8 sec.
Control by: PLC & sensors

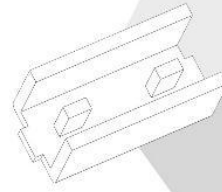


Unique **CCL** core linkage mechanism

Lead clamping before cutting
Avoiding the component jumping/cutting surface deformation

Whole CCL mechanism adopts the integrated floating design,the length adjustment of lead after cutting only needs to loosen the screw of the green adjustment block and adjust the height, which is simple and fast

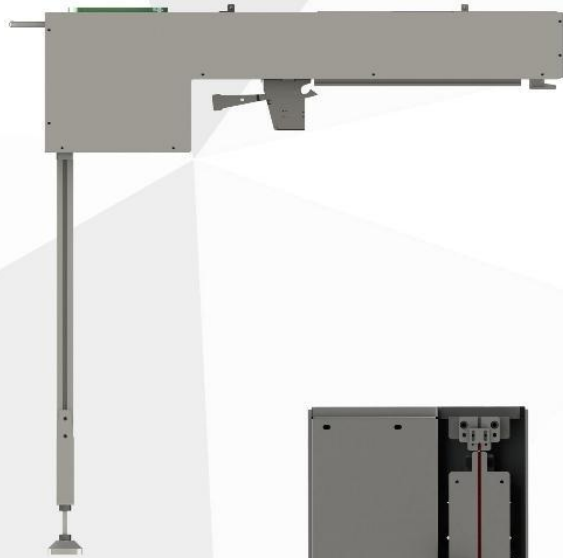
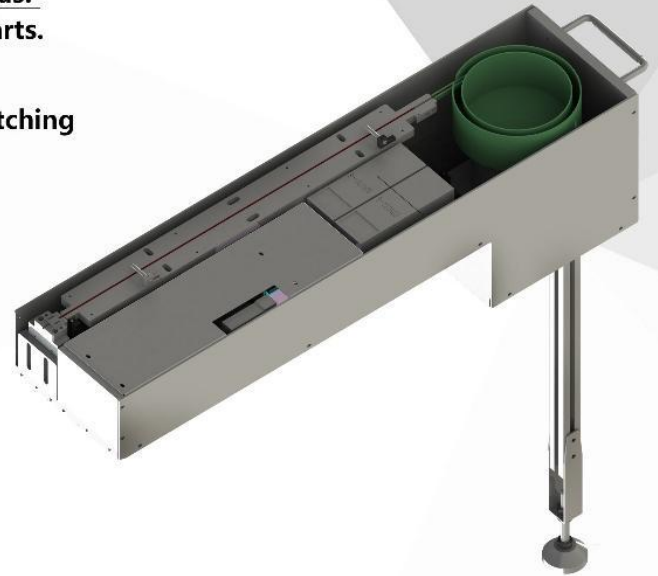
MBF-2003 MINI BOWL FEEDER



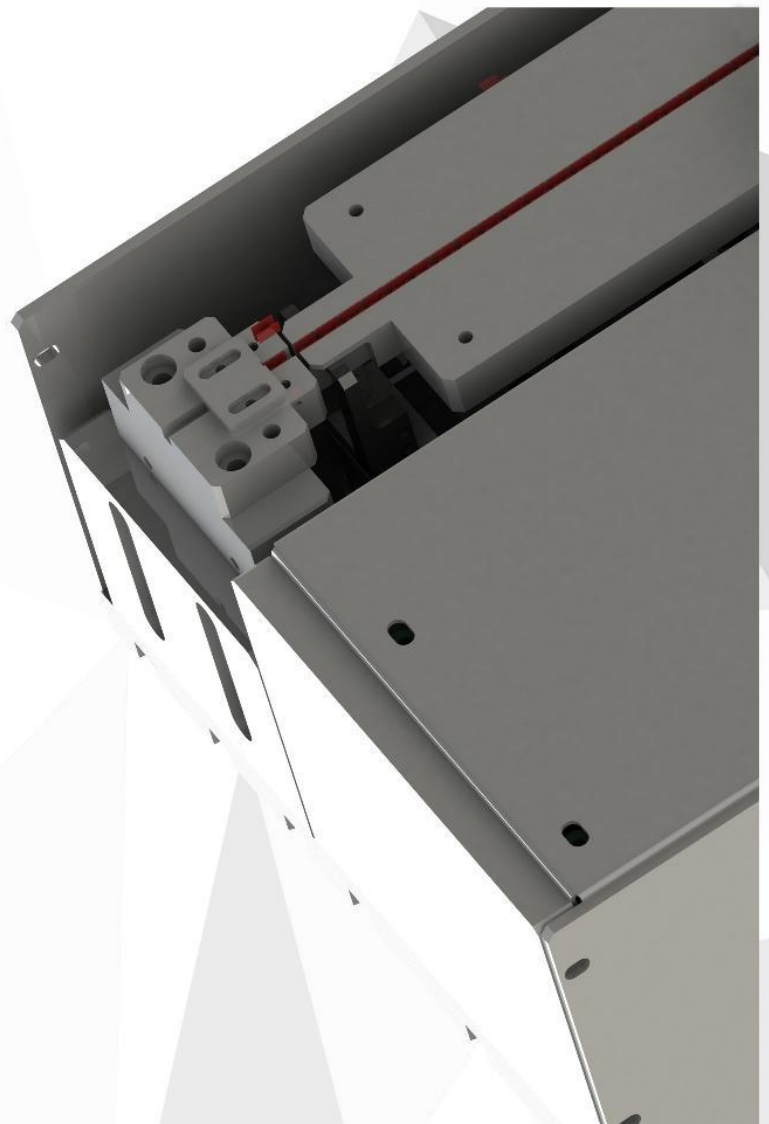
This feeder is use for SMT mounter machine,feeding such as: terminals/crystals/IC/Chip Diode/SMD triode/hardware parts.

Suitable for Panasonic,Juki,Fuji,ASM,Universal ,etc.almost all brands of mounter,which is with height mechanical matching and communication to machine.

With only 200mm width saves more space for you.



Feeder is generally made of steel and aluminum alloy,which guarantees the body stability,low loss and long life.

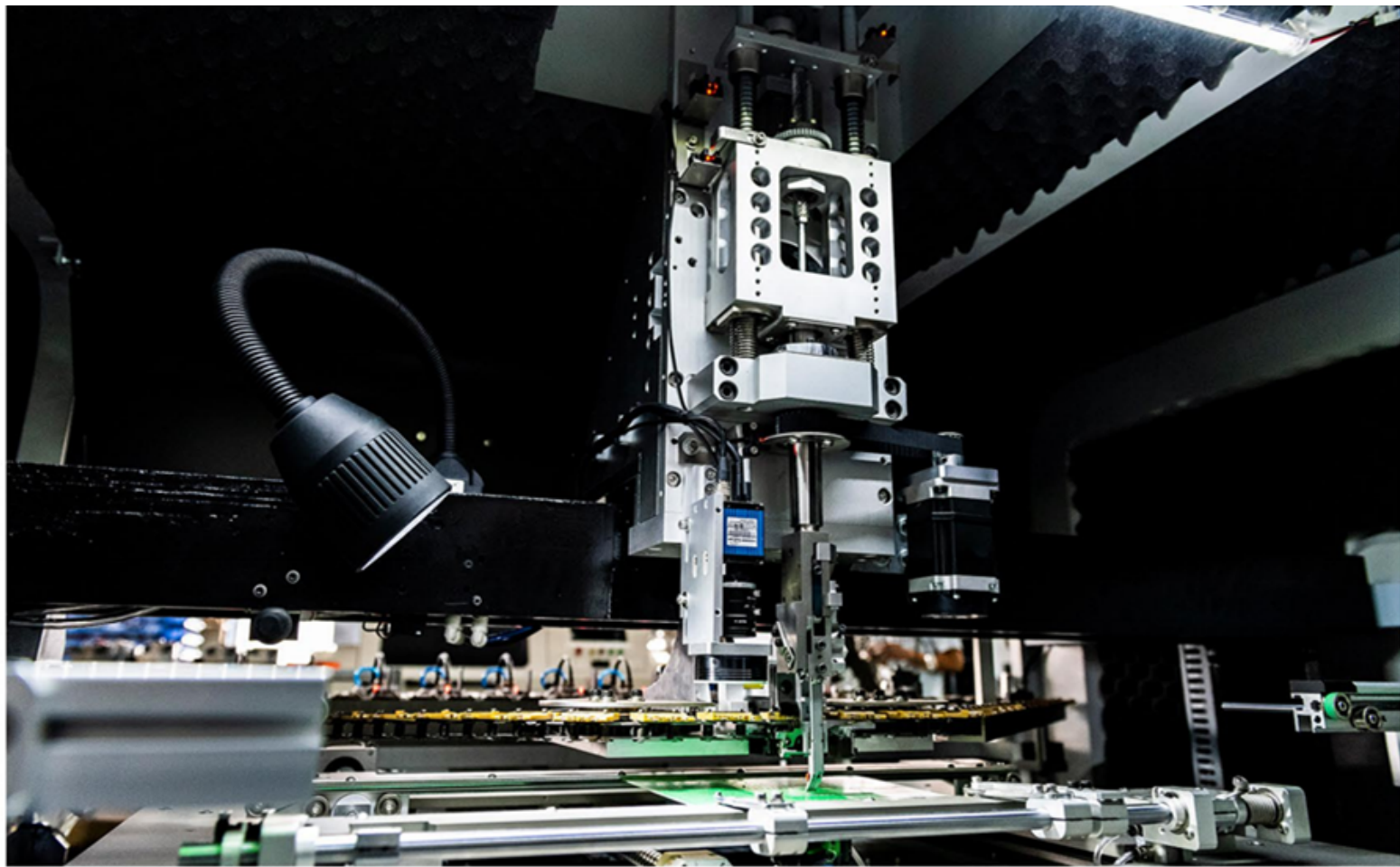


Dimensions L*W*H :850*200*930 mm
Power supply: 110/220 V
Cycle time: ≤ 0.8 sec.
Control by: Vibration AMP (V&Hz)

S3010A
Radial Inserter



The expert of through-hole automation

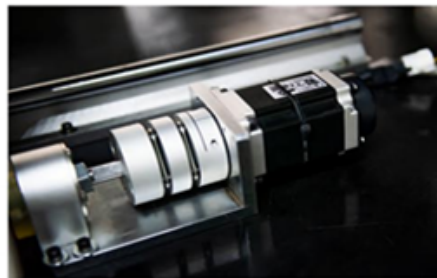


The S3010A brings a new level of productivity to radial component sequencing and insertion, offering consistently high throughput regardless of component type.

- high real throughput (12000 CPH)
- World-class reliability (1000 ppm)
- Manual Load or Automatic PCB Load/Unload
- Multiple clinch options with programmable height to avoid damaging SM components
- Scalable production – 10 to 100 inputs, (In-Line or Straight-Back)
- Single, dual, triple, and quad-span tooling
- Full range of insertion spans from 2.5mm to 10.0mm, including 3.5mm
- Widest component range – up to 22mm tall with no derate
- Component value and polarity verification prior to insertion
- Intuitive, graphical operator environment



1.5 KW head-driven motor

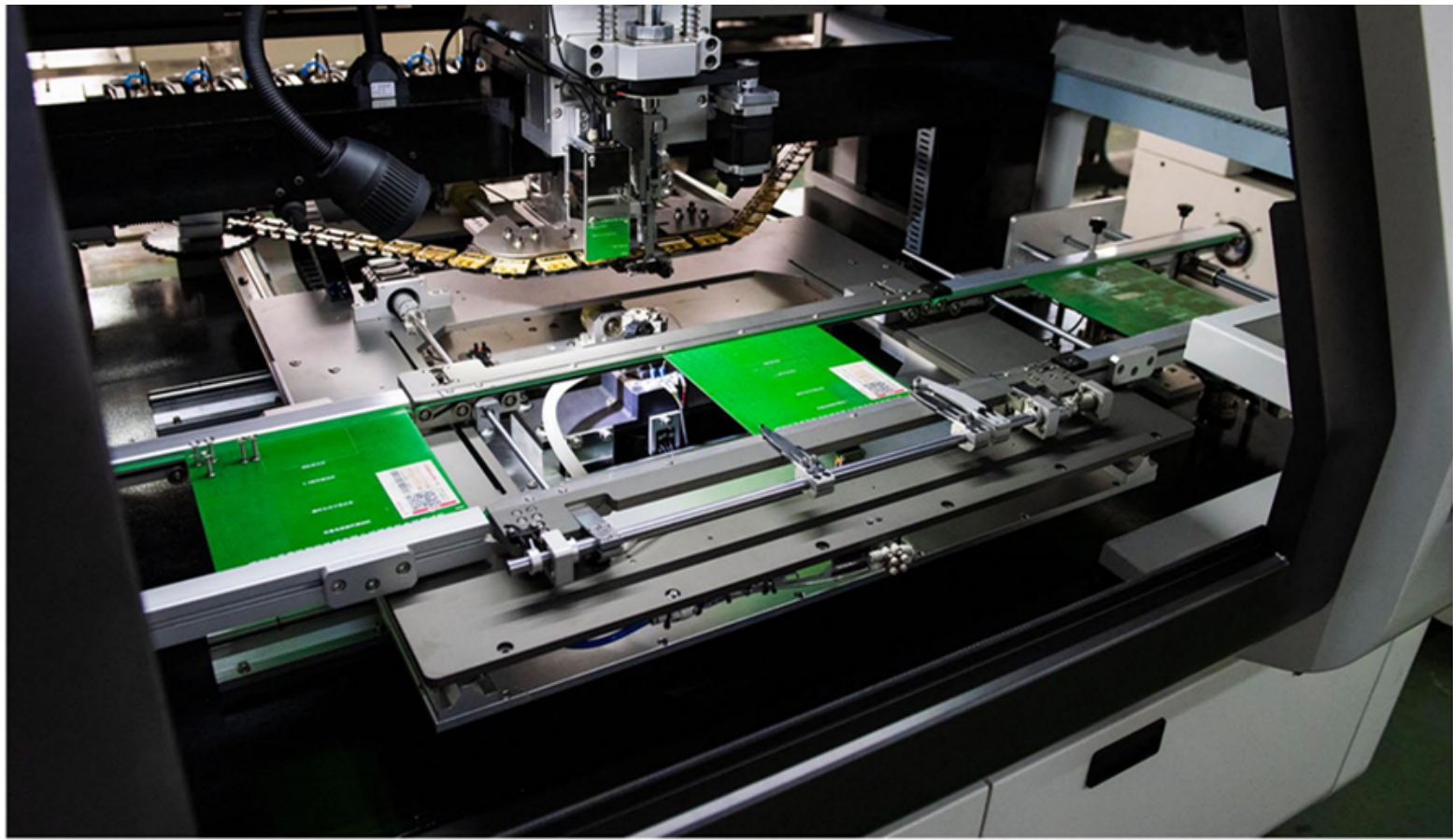


400W X-Y table motor

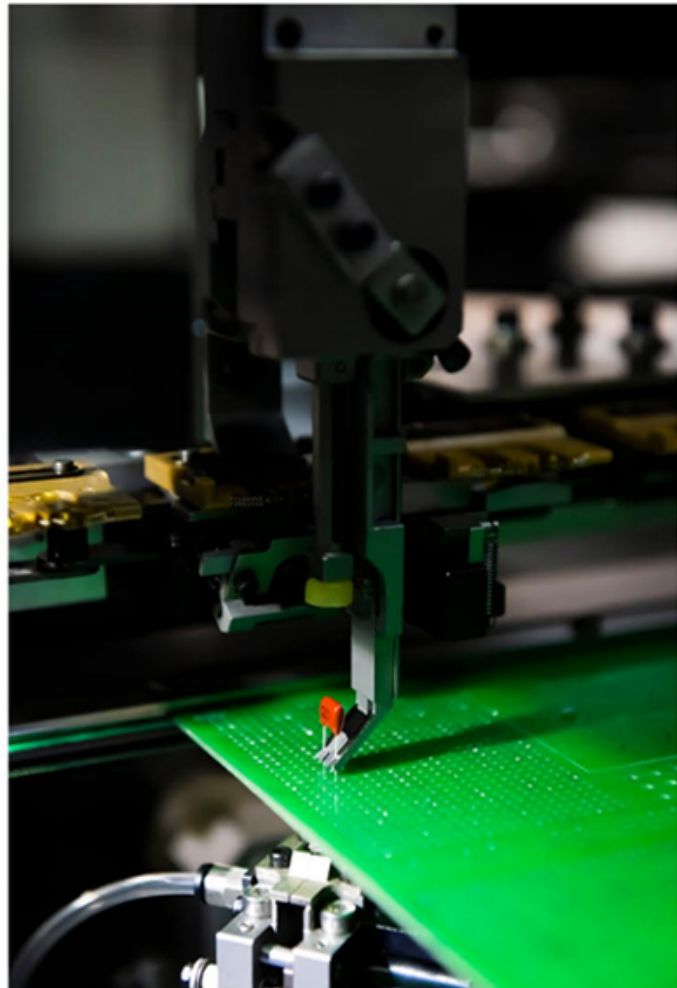


Full servo system

Full Fuji Servo Drive System bring high throughput (12000 CPH) and reliability (1000ppm)

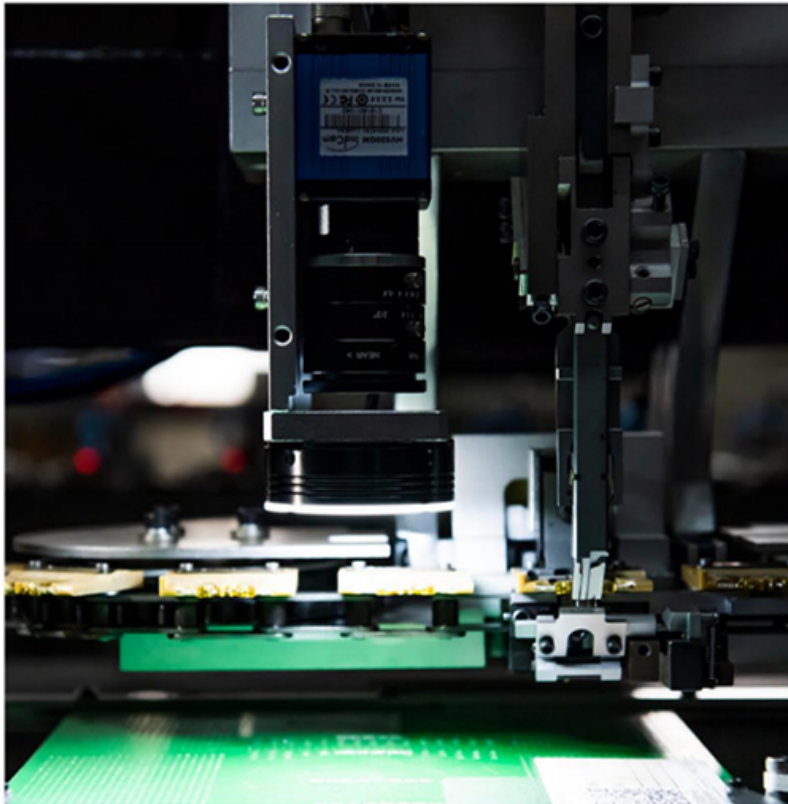


Auto PCB loading and unloading,MAX PCB size support : 400*400mm

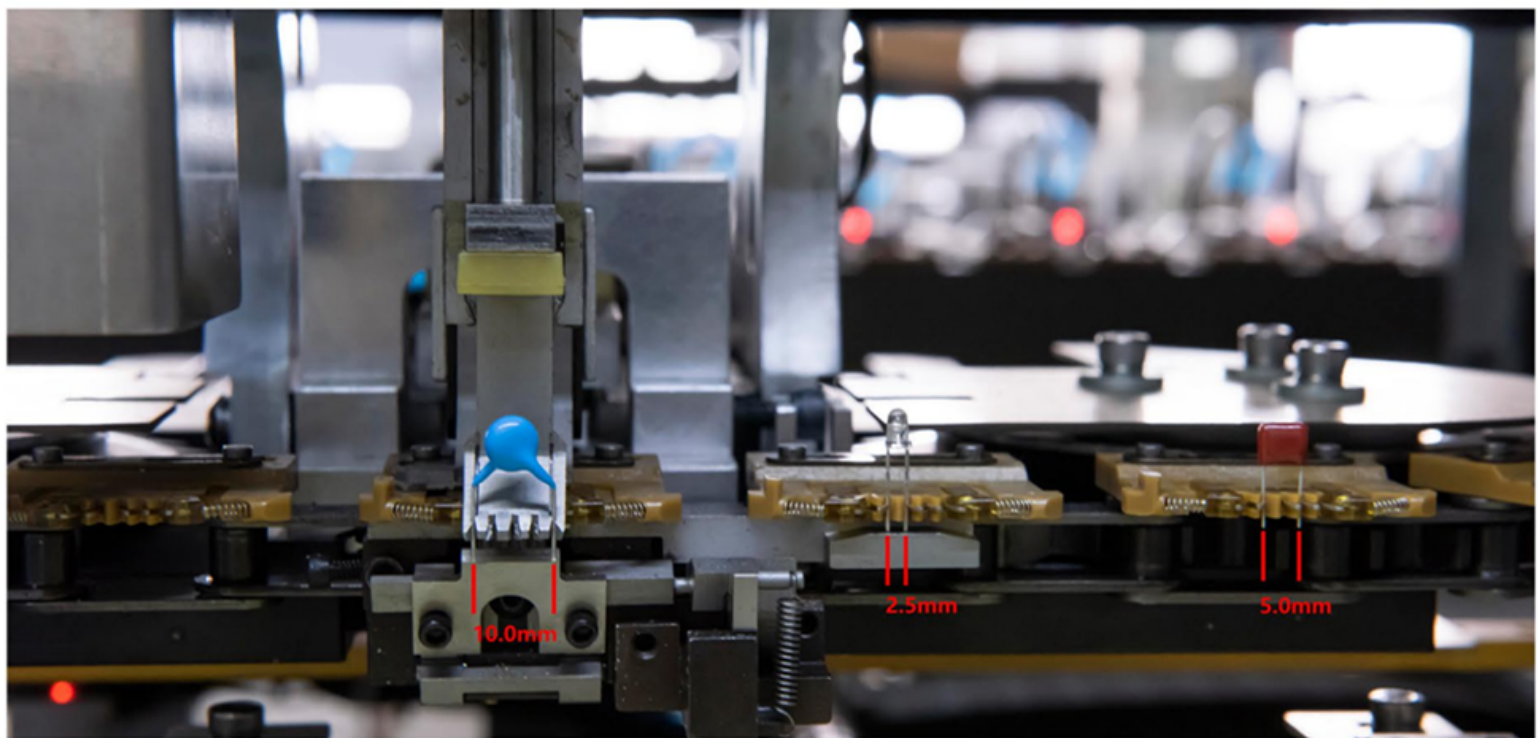
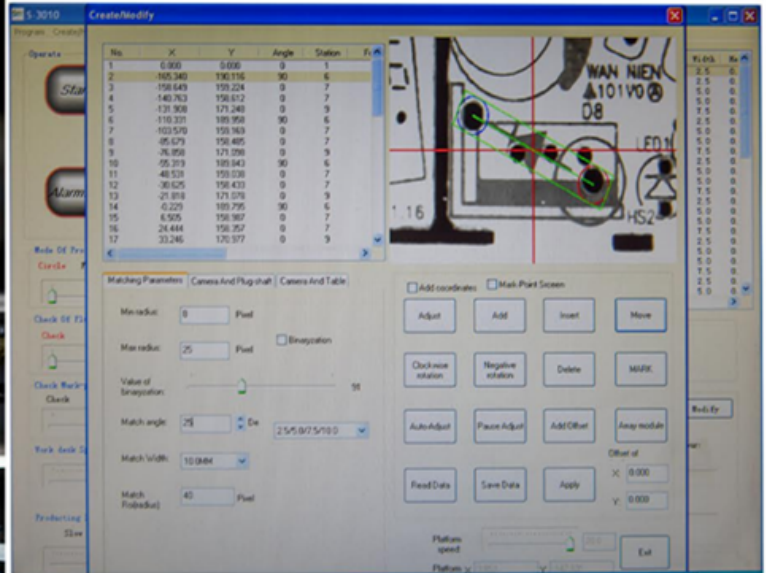


Compatible with UIC parts:
insertion head , clinch base , CTA
carriers, feeders





camera visual operating system makes programming faster, the operator can finish a new PCB insertion program within 5 minutes



Quad-span support (optional) :

2.5/5.0/7.5/10.0 mm span component can be insert at the same time

Application:



LED Signage / LED Illumination



LED Drivers / Fluorescent Ballasts



Set-top Box / Game / Motherboard



Appliance (White Goods)



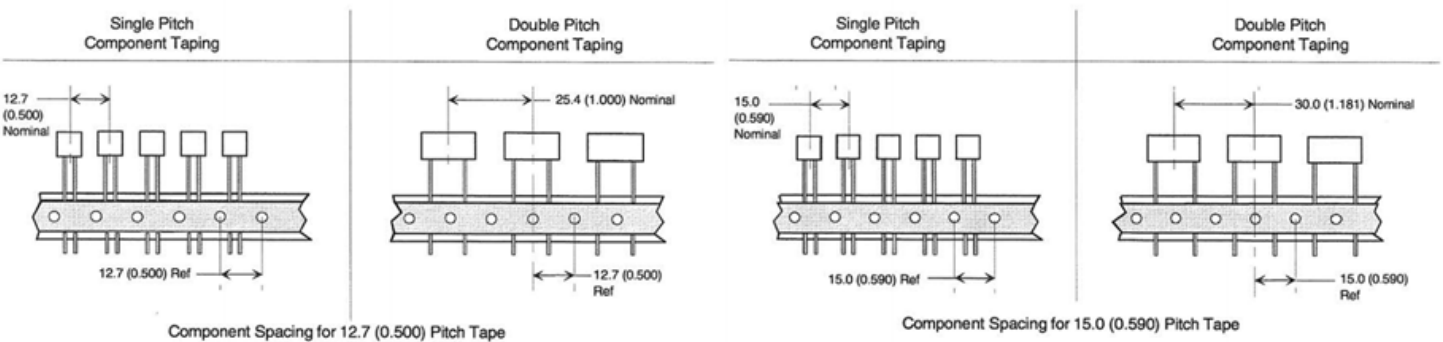
Power Conversion



High-Mix Environments

Insert a full array of radial lead components in tape-package:

Connectors	Transistors	Tabs/Clips	E-Caps	Resistors	Adjustable Resistors	Capacitors	Veristors/ MOVs	LEDs



Machine specification

S-3010A	Radial insertion machine
	1) Triple span 2.5/5.0mm
	2) 12000 CPH, actual speed 10000 CPH
	3) Insert direction: 0° -360°, 1° increment
	4) Servo motor driven insertion head (13.0mm, 22mm tall) and clinch base "N" type. -
	5) Components available: Capacitor, Transistor, LED lights, Key Switch, standard tape packed radial leads components
	6) Core Machine Size (LxWxH) 1800x1600x1800mm,
	7) Machine Weight: 1000KG -
	8) Power supply: 220V, AC (single phase) 50/60 HZ -
	9) Air pressure: 0.6MPA; 0.3M3/MIN -
	10) Circumstance temperature: 10° C. to 35° C. -
	11) PCB Size: (Min) 50 mm x 50mm, (Max) 400mm x 400mm -
	12) PCB thickness: 0.79-2.36MM -
	13) Clinch Length: 1.5-2.2MM -
	14) Clinch degree: 10-35 degree -
	15) Coordinate correction: Machine vision systems -
	16) Non rotary table -
	17) Machine vision calibration systems -
	18) Control System: English or Chinese version interface -
	19) Southern Machinery platform software -
	20) LCD monitor -
	21) Industrial-control computer -
22) 10 Feeder -	



info@SMTheIp.com

WWW.SMTHELP.COM